



MAV HD:IP

High Definition ANPR Network Camera



HD quality
Dual ANPR and Overview
maxIRange™ Illumination
Network Enabled

The MAV HD:IP is an ONVIF compliant 720p HD resolution ANPR network camera with fully motorised varifocal lens for both IR and colour overview cameras. Configurable H.264 recognition streams ensure high quality images. Built in maxIRange™ pulsed IR lighting offers 3-50m IR performance for day and night use on high speed moving traffic.

The MAV HD:IP provides third party ANPR software with up to thirty 720p images per second from both the ANPR and Overview camera modules. This industry standard output is ONVIF compliant to integrate with standard video network architectures.

The video streams, control protocol and power POE+ are all presented on a single Ethernet connection, simplifying the installation process to being a single cable from a switch or injector.

The MAV HD:IP provides recognition streams suitable for capture of up to 8m lane widths and is simple to set up for perfect field of view at distances from 3m up to 50m. Setup is performed using the camera's API/web pages or from an ONVIF compliant control device.

The camera's housing is made of high quality machine milled aluminium and is fully sealed to IP68. Further purged for the removal of moisture for trouble free images and long life performance.

REASONS TO BUY MAV HD:IP

ONVIF PROFILE-S COMPLIANT – Support for standard networking solutions

HIGH QUALITY IMAGES - best quality configurable video streams

ZOOM CAMERAS - controllable for the perfect field of view

POWERFUL IR - for true day/night number plate recognition up to 50m

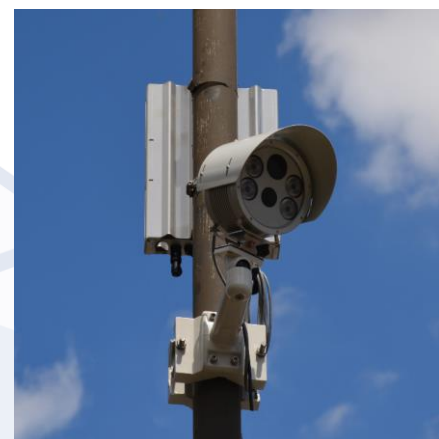
MULTI-LANE – high resolution images providing excellent recognition

SINGLE PACKAGE - ANPR & Overview network cameras in the same enclosure

PERFORMANCE - 30 HD 720p images per second

ILLUMINATION - pulsed illumination with control capabilities over network

CONTROL - full control and feedback of network cameras and IR settings



MAV HD:IP OVERVIEW

ONVIF compliant, dual ANPR HD network camera to seamlessly integrate with an existing infrastructure.

| Specifications | MAV HD:IP |
|----------------------------------|--|
| Recognition range | Capture of up to 8m of traffic lanes at 3m to 50m (850nm IR on EU retro-reflective plates) |
| Motorised lenses | 60° to 3° Horizontal Field of View – lens equivalent 4.5mm to 125mm Remote controllable zoom, focus and iris including shutter priority and preset capability |
| IR illumination | 4 pulsed LED arrays with lenses (850nm standard. White light, 740nm or 940nm optional) |
| Image sensor (ANPR and Overview) | Two cameras: 1280(H) x 720(V) effective picture elements at 30 fps |
| Low light | ANPR: 0.0 Lux with IR illumination OV: 0.1/0.006 Lux (Colour/B&W (no IR Cut) selectable) |
| Shutter / Iris | 1/50 to 1/10,000 / F1.4 (wide) to F4.2 (tele) |
| Optical filters | IR: Bandpass matched to LEDs OV: Day/Night IR Cut Filter |
| Camera control | Via ONVIF or direct commands |
| Video compression | H.264 high profile, dual stream, AVI format; 0.1M-6Mbps bit rate adjustable; 1-30fps adjustable frame rate from encoder; quality and GOP adjustment available |
| Resolutions | Main stream: 1280x720 @ 30fps; sub streams available: 704x576 , 352x288 |
| Network | Single RJ45 presentation of both streams; Support RTSP/FTP/PPPOE/DHCP/DDNS/NTP/UPnP |
| Configuration | Support web page remote configuration |
| ONVIF | Profile-S compliant |
| Physical | |
| Operating voltage | 11 – 15 VDC protected or PoE+ (IEEE 802.3at) |
| Network connection | 10/100 Base-T physical |
| Power consumption | Nominally 20W – Peak 25W (during power up/zoom) |
| Size (WxHxD) | 163 x 163 x 145mm (cylindrical) excluding connectors, mount and sunshield |
| Weight | 2.5kg excluding mount and sunshield |
| Enclosure | IP68 hermetically sealed. Hard anodized aluminium with mount options |
| Temperature / Humidity | -20° to 50°C ambient (Operating) / 0% - 100% RH (sealed) |
| Service | |
| Customer service | Friendly, helpful service for product ordering and repair returns |
| Technical support | Comprehensive pre and post-sale technical support for full life of the product |
| Warranty | 12 month warranty, extended warranties and factory repair/replacement options available |
| Long term supply | Complete support for the life of the product |
| Training | Comprehensive product training available |



MAV Systems Limited,
Unit 1, Lullingstone Park Farm Offices
Eynsford, Kent, UK, DA4 0JA
+44 333 800 3050
www.mav-systems.com
www.anprcameras.com