



Rapier 53IP Hybrid

COMBINED HD ANPR CAMERA AND INTEGRAL SD OVERVIEW
CAMERA WITH PULSED IR LED ILLUMINATION



Long Range Fixed Site ANPR
 Freeflow Parking
 Congestion Charging
 Journey Time Analysis
 Road Tolling
 Bus Lane Enforcement
 Security

WINNING HD ANPR PERFORMANCE

The Rapier 53IP 1.3Mpixel incorporates HD ANPR and SD overview cameras. The ANPR 1.3Mpixel high definition GigE camera module is synchronized to our innovative InfraRed (IR) pulsed LED designs. The 12 x Optical zoom overview Day/Night is used to provide a formidable ANPR/LPR camera solution for use in fixed site applications with multi-lane coverage and high speed traffic capabilities.

The Rapier 53IP provides up to 50 digital images per second at 1280 x 1024 pixel resolution without any compression of the video data or effects of analogue cabling. This means around 8 times more accurate information and recognition over a far wider field of view.

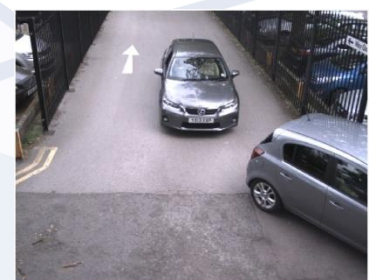
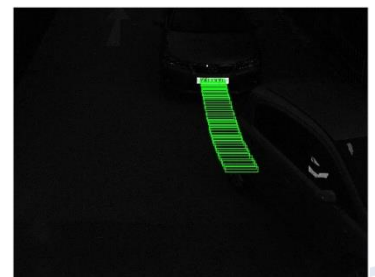
Rapier 53IP is available as a mono ANPR only camera or dual hybrid with a second IP Encoded SD colour 12 x optical zoom module for evidential image capture. Optional internal IR Units can provide 2 or 4 LED units to increase illumination.

Rapier 53IP has been designed to work in conjunction with our optional Rapier 50LX illumination unit that can be added to provide improved night-time overview images.

Rapier 53IP has been designed for ease of use in fixed applications with standard CCTV installation options for use on gantries, lamp posts and bridge.

REASONS TO BUY RAPIER 53IP HYBRID

- MULTI-LANE** – high resolution images providing excellent recognition
- PERFORMANCE** - best-in-class with fifty HD images per second
- ILLUMINATION** - pulsed illumination with control capabilities over network
- ECONOMICAL** - low power consumption but high light output
- RUGGED** - high grade metal enclosure with simple installation options
- SEALED** - hermetically sealed to IP68 for demanding physical environments
- CONTROL** - full control and feedback of cameras and IR settings
- SLAVE ILLUMINATION** – optional units for improved overview images at night
- HD IP** – GigE Ethernet connectivity for fully digital raw images



RAPIER 53IP HYBRID SPECIFICATION

Rapier 53IP High Definition ANPR cameras can be combined with an overview camera in a single compact IP68 enclosure. Overview camera options include SD 12 x optical zoom, PAL/NTSC IP encoded 25FPS, Direct 10/100 interface.

Specification	
Recognition Range and Field of View	Typically 5 to 50 metres depending on choice of lens (8, 12, 16, 25, 35mm) Field of view typically 6m (2 lanes of traffic) at high speed with very high accuracy
Illumination (built in)	2 or 4 high power pulsed LED arrays (White Light, 740nm, 850nm or 940nm) with lens beam pattern options
Illumination (external)	Trigger I/O available with MAV Snap Mode and Triggered sequences available
Image	1/1.8" sensor with 1280(H) x 1024(V) effective picture elements providing raw 1.3 Megapixel images
Image manipulation	Camera based Area of Interest (AoI) facilities and scaling possible via SDK or control application
Frame rate	Up to 50 images per second (ips). Snap mode also allows triggered single or sequential capture
Exposure Time / Equivalent Shutter (based on 50 ips)	Global exposure time 50µs - 20ms / Equivalent shutter speed 1/20,000 th to 1/50 th second
Illumination period/power	Illumination pulse width, offset and power variable under software control including tracking of exposure
Overview (optional)	12x Optical Zoom 752(H) x 582(V) effective picture elements, 680 TVL, Day/Night IR Cut, Colour/B&W, 1/120,000 th to 1/50 th second and sequential shutter options Encoded video output H.264, MPEG-4, MJPEG, JPEG
Cabling	Maximum cable length 100m without GigE network relay
Camera Control Protocols	GigE SDK and AVML and other standards available via RS232
Operating Voltage	10-15VDC protected
Power Consumption	Nominally 30W
Physical (WxHxD)	163 x 163 x 114 mm (cylindrical) - excluding brackets/sunshield
Enclosure	IP68 hermetically sealed hard anodised aluminium in natural aluminium with rugged mount options
Weight	Camera 2.45 Kg – Camera with Sunshield and bracket 3.00 Kg
Temperature	-20°C to 50°C operating
Options and Accessories	
Cable harness sets	The camera is fitted with high-grade locking connectors. Connection from the Rapier to the ANPR equipment is available through CAT5e cabling. The unit is powered by 12VDC power and has I/O connectivity for triggering multiple units.
Brackets	A range of metal cradles, brackets and sunshields are available for fixed installations. Modified and bespoke metalwork can be designed and supplied to meet specific demands. Standard ranges include rapid fixing brackets/adaptors to standard CCTV (4" / 102.5mm PCD), RAM Mount and tripod connectors in pole/wall mount configurations with tilting/panning and yaw capabilities for better alignment. The sunshields are available in a variety of construction techniques and sizes.
Pan and Tilt	MAV Systems provide pan and tilt heads, and interface units, to enable remote movement of the camera position. Pan and Tilt units have jog and preset capabilities that can be combined with presets to create integrated fixed platforms. Pan and Tilt interfaces support industry standard protocols, with enhanced features through the MAV AVML protocol.
Service	
Customer Service	Friendly, helpful service for product ordering and repair returns
Technical Support	Comprehensive pre- and post-sale technical support for full life of the product
Warranty	12 month warranty, extended warranties and factory repair/replacement
Long Term Supply	Complete support for full life of the product
Training	Comprehensive product training programmes for customers



MAV Systems Limited,
Unit 1, Lullingstone Park Farm Offices
Eynsford, Kent, UK, DA4 0JA
+44 1344 859753
www.mav-systems.com
www.anprcameras.com