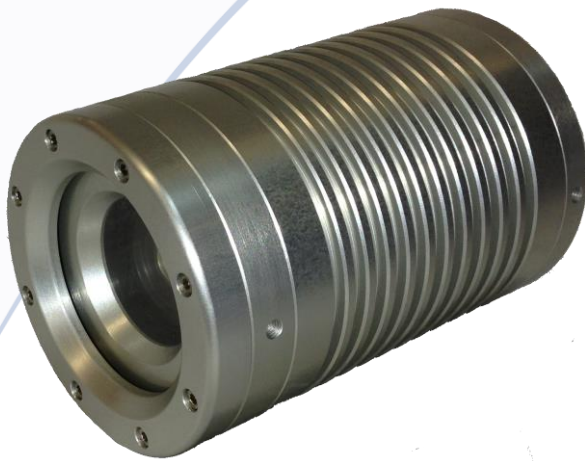




# Rapier 40

12X ZOOM DAY/NIGHT OVERVIEW CAMERA



Dynamic Movement  
Long Life Performance  
ANPR Configurable

## PERFECT FIELD OF VIEW

The Rapier 40 Day/Night overview camera uses a standard definition 12x optical zoom camera.

This gives exactly the field of view required, not limited by fixed focal length lenses. The zoom and focus capabilities can be easily preset and moved dynamically.

With full manual control the camera can be configured to be used for ANPR in daytime or with separate slave illumination for full 7x24 hour operation.

The Rapier camera's housing is fully sealed to IP68 and purged for long life performance.

### Specification

Optics	12x optical zoom, equivalent to f=3.94 to 46.05mm, HFoV 51.54° (Wide) to 4.49° (Tele), F1.6 to F28.
Sensor	752(H) x 582(V) effective picture elements 680 TVL Colour/B&W
Image Format	PAL video 1V p-p 75Ω CVBS, Day/Night IR Cut filter for Colour/B&W (Auto/Manual)
Image Features	1/50 <sup>th</sup> to 1/10,000 <sup>th</sup> , Electronic Gain/AGC -3dB to +28dB with max gain limit, Flip, Mirror
Light Sensitivity	Colour Overview 0.2 Lux Colour / 0.04 Lux B/W (Full Auto/Manual).
Connectivity	1 off 12 way Hirose HR30 or Binder 720 – 1 x video, 1 x sync, 1 x Power and 1 x RS232.
Protocols	AVML.
Operating Voltage	10-15VDC.
Power Consumption	Nominally 10W.
Physical	76mm cylindrical x 114 mm long – excluding connector, brackets and sunshield.
Enclosure	IP68 hermetically sealed hard anodised aluminium in black or clear aluminium.
Temperature	-20°C to 50°C operating.

### Options and Accessories

Cable harness sets	The camera is fitted with high-grade locking connectors with a choice of Binder 720 or Hirose HR30 types, the latter being compatible with other standard Rapier cabling and splitters. The unit is powered by 12VDC power and has analogue video output and RS232 for setup of the analogue zoom camera.
Brackets	A range of metal cradles, brackets and sunshields are available. Modified and bespoke metalwork can be designed and supplied to meet specific demands. Sunshields are available in a variety of construction techniques and sizes.