



Eagle

IP67 PULSED LED ILLUMINATION ENCLOSURE FOR GigE CAMERA MODULES



LIGHTING AND PROTECTION

The Eagle enclosure with its fully integrated pulsed illumination circuits allows system integrators to deploy a wide range of GigE cameras within a fully sealed unit.

The Eagle provides full protection of the camera and lens from the environment. A wide range of suitable cameras and lenses are available from Stemmer Imaging. Advice on the most effective combinations for your application can be obtained from MAV Systems or Stemmer Imaging.

Eagle is offered with a wide choice of LED wavelengths including White Light, 740nm, 850nm and 940nm. The camera can be equipped with a choice of bandpass/longpass filters.

The illumination is capable of being driven in full synchronization with the camera through internal circuitry that tracks the camera's exposure time automatically. High speed pulse regeneration allows the Eagle pulsed drive circuit to operate at in excess of 100 fps. The unit will also operate in an asynchronous 'snap' mode when the camera is working at slow frame rates or in a triggered mode of operation.

The full housing is sealed to IP67 and can be provided full assembled with lens factory set and dry air purged for long life performance.

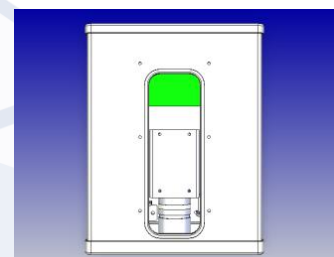
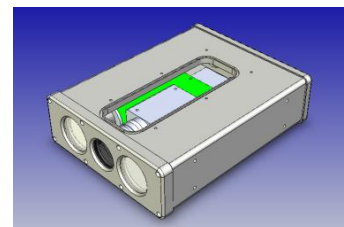
IN PARTNERSHIP WITH

STEMMER
IMAGING

Fixed Site ANPR
Congestion Charging
Journey Time Analysis
Road Tolling
Container Scanning
Traffic Management

REASONS TO BUY THE EAGLE

- MULTI-LANE** – high resolution images providing excellent recognition
- FLEXIBILITY** – choice of machine vision modules
- ILLUMINATION** - pulsed illumination with control capabilities over network
- ECONOMICAL** - low power consumption but high light output
- SEALED** - hermetically sealed to IP68 for demanding physical environments
- CONTROL** - full control and feedback of cameras and IR settings
- HD IP – GigE** Ethernet connectivity for fully digital raw images
- ACCESSORIES** - full range of cables, brackets and sunshields



EAGLE OVERVIEW

Enclosure designed for HD/GigE cameras with high output IR illumination in a compact IP67 enclosure suitable for deploying into live applications. Available with a full range of accessories and cabling

Specification	
Camera/Lens models	Please refer to MAV Systems or Stemmer Imaging for advice
Illumination (built in)	2 high power pulsed LED arrays (White Light, 740nm, 850nm, 870nm or 940nm) with lens beam pattern options
Illumination (external)	Trigger I/O available with MAV Snap Mode and Triggered sequences available
Illumination Frame rate	Up to 100 images per second (ips) depending on chosen camera. Snap mode also allows triggered single or sequential capture
Illumination Duration / Equivalent Shutter	50µs – 3.2ms Equivalent shutter speed 1/20,000 th to 1/300 th second
Illumination period/power	Illumination pulse width, offset and power variable under software control including tracking of exposure (configuration via internal RS232 or linked via camera over IP)
GigE Connection	GigE video presented via bayonet locking Cat5e IP67 connector (mating part Conec 17-10001)
Power/IO Connection	5 way Binder 720 connector (mating part Binder 99-9114-00-05 for 4-6mm cable)
Operating Voltage	10-15VDC protected
Power Consumption	Nominally 25W excluding chosen camera
Physical	197 x 156 x 59 mm (l x w x h) - excluding brackets/sunshield/connectors
Enclosure	IP68 hermetically sealed hard anodised aluminium in choice of Black or RAL9002 (white grey) with rugged mount options
Temperature	-20°C to 50°C operating
Options and Accessories	
Cable harness sets	The enclosure is fitted with high-grade locking connectors. Connection from the Eagle to the PC equipment is available through CAT5e cabling. The unit is powered by 12VDC power and has I/O connectivity for triggering multiple units.
Brackets	A range of metal cradles, brackets and sunshields are available for fixed installations. Modified and bespoke metalwork can be designed and supplied to meet specific demands. Standard ranges include rapid fixing brackets/adaptors to standard CCTV (4" / 102.5mm PCD), RAM Mount and tripod connectors in pole/wall mount configurations with tilting/panning and yaw capabilities for better alignment. The sunshields are available in a variety of construction techniques and sizes.
Pan and Tilt	MAV Systems provide pan and tilt heads, and interface units, to enable remote movement of the camera position. Pan and Tilt units have jog and preset capabilities that can be combined with presets to create integrated fixed platforms. Pan and Tilt interfaces support industry standard protocols, with enhanced features through the MAV AVML protocol.
Service	
Customer Service	Friendly, helpful service for product ordering and repair returns
Technical Support	Comprehensive pre- and post-sale technical support for full life of the product
Warranty	12 month warranty, extended warranties and factory repair/replacement
Long Term Supply	Complete support for full life of the product
Quality Management	MAV Systems operates a quality management system complying with ISO9001:2000
Training	Comprehensive product training programmes for customers



MAV Systems Limited,
Unit 1, Lullingstone Park Farm Offices
Eynsford, Kent, UK, DA4 0JA
+44 1344 859753
www.mav-systems.com
www.anprcameras.com

IN PARTNERSHIP WITH

STEMMER
IMAGING